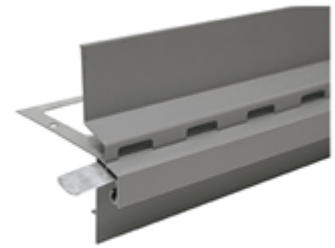


## BALCONY DRAINAGE PROFILE

- > decorative finish
- > colour-stable
- > weather and UV-resistant



### Product description

High quality, drainable, grey powder-coated aluminium profile for the edge ending of tiles, boards and natural stone coverings. Optimum flow of moisture is ensured by the drainage holes. For elegant closure of open fronts of balconies and terraces when using drainage screeds, mortars and other drainage system or also for gravel aggregate.

#### Delivery format:

Container	Outer packaging	Pallet
2,5 M / Pcs.		8

#### Storage:

Can be stored frost-free, cool and, dry on wooden shelves in unopened original container: unlimited shelf life

### Processing

#### Processing:

Lightly sand the substrate in the area of the terrace profile, so that no height differences occur. The balcony drainage profile is now laid in the seal with the moulded part and smoothed over. Sealing tape must be worked into the transition to other components to absorb potential heat expansion of the profile. Then the selected drainage system can be applied. Use Murexin external corners for elegant corner shaping or connectors and connector reinforcements are available for profile ends.

### Technical data

Consumption

(Determined in standard climate, 20 °C/60% relative air humidity)  
Rod length: 2.5 m 60 mm high

## Substrate

### Suitable substrates:

Concrete  
Cement screed  
Anhydrite screed  
Mastic asphalt  
Gypsum plaster  
Lime-cement plaster  
Masonry  
Gypsum plasterboard  
Formwork-smooth concrete  
Aerated concrete  
Wooden materials

Not suitable for the adhesion of Murexin Uniplatte or polystyrene.

The substrate must be dry, frost-free, solid, weight-bearing, dimensionally stable, free of dust, dirt, oil, grease, release agents, and loose parts, and it must comply with the applicable technical national and European directives, standards, and "generally accepted rules of the trade".

## For a perfect system

### System products:

Murexin balcony drainage profile external corners, Murexin balcony drainage profile connector, Murexin balcony drainage profile connector reinforcer

## Product and processing instructions

### Material information:

- The properties of the material may be significantly altered if not processed within the ideal temperature and/or humidity range.
- Bring the materials to the proper temperature before processing!
- To maintain the product properties, do not add any foreign materials!
- Water dosing quantities or dilution information must be strictly adhered to!
- Check tinted products for colour accuracy before application!
- Colour consistency can only be guaranteed within the same batch.
- The environmental conditions significantly impact colour formation.

### Environmental information:

- Do not process at temperatures below + 5°C!
- The ideal temperature range for the material, substrate, and air is +15°C to +25°C.
- The ideal humidity range is 40% to 60% relative humidity.
- Increased air humidity and/or lower temperatures may prolong the drying, setting, and hardening time, while lower air humidity and/or higher temperatures will speed it up.
- Ensure adequate ventilation during the drying, reaction, and hardening phase; avoid draughts!
- Protect against direct sunlight, wind, and weather!
- Protect adjacent components!

### Tips:

- We recommend using a test surface first or a small area for initial, small-scale testing.
- Please observe the product data sheets of all MUREXIN products used in the process.
- Keep a genuine original container of the respective batch for later repair work.

**44061, BALCONY DRAINAGE PROFILE, valid from: 20.08.2018, Magdalena Riegler, Page 2**

The information provided reflects average values obtained under laboratory conditions. Due to the use of natural raw materials, the indicated values of individual deliveries may vary slightly without impacting the product suitability.

### Safety instructions

This leaflet is based on extensive experience, is intended to convey the best of our knowledge, is not legally binding, and neither constitutes a contractual legal relationship nor a subsidiary obligation resulting from the bill of sale. The quality of our materials is guaranteed within the framework of our general terms and conditions. Our products may be used by professionals and/or experienced and accordingly technically skilled persons only. Users are not released from inquiring in case of uncertainties or from rendering professional workmanship. We recommend using a test surface first or a small area for initial, small-scale testing. Naturally, it is not possible to describe or foresee all possible current and future uses and peculiarities. Information that is assumed to be familiar to experts has been omitted.

Please observe the current, technical, national and European standards, guidelines and data sheets regarding materials, substrates and the subsequent construction. Please contact us if you have any reservations or doubt. This version is rendered invalid if a new version is released. The most recent data sheets, safety data sheets and the terms and conditions are available online at [www.murexin.com](http://www.murexin.com).